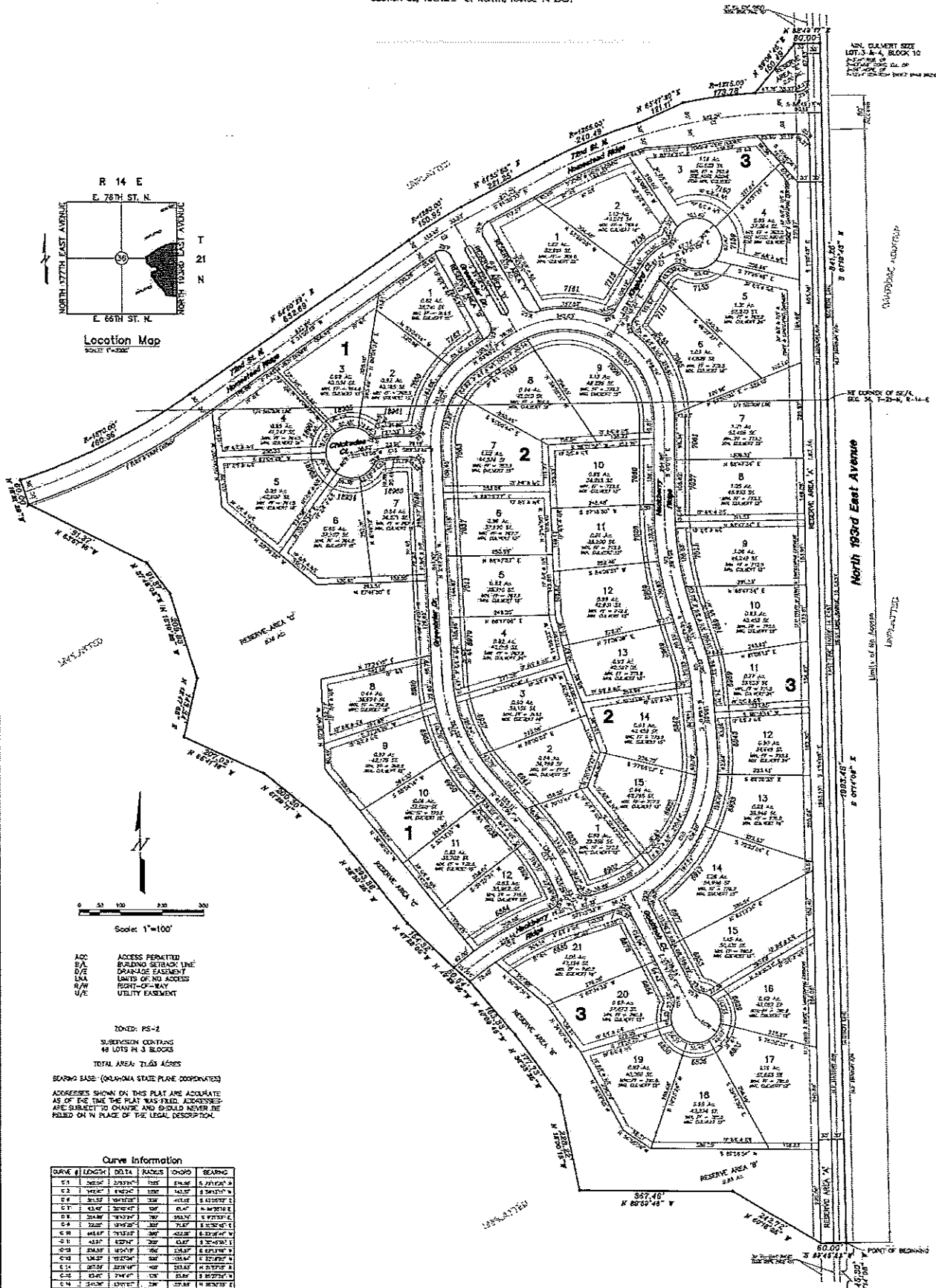
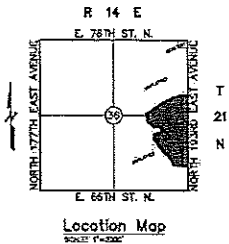


# DRAFT FINAL PLAT

## SETTLER'S CREEK AT STONE CANYON

AN ADDITION TO ROGERS COUNTY, STATE OF OKLAHOMA  
SECTION 36, TOWNSHIP 21 NORTH, RANGE 14 EAST



- ADD ADDRESS PERMITTED
- B/L BUILDING SETBACK LINE
- D/E DRAINAGE EASEMENT
- N/A LIMITS OF NO ACCESS
- R/W RIGHT-OF-WAY
- U/E UTILITY EASEMENT

INDEX: PS-2

SUBDIVISION CONTAINS 21 LOTS IN 3 BLOCKS

TOTAL AREA: 7.133 ACRES

BEARING BASE: (OKLAHOMA STATE PLANE COORDINATES)  
ADDRESSES SHOWN ON THIS PLAT ARE ACCURATE AS OF THE TIME THE PLAT WAS FILED. ADDRESSES ARE SUBJECT TO CHANGE AND SHOULD NEVER BE RELIED ON IN PLACE OF THE LEGAL DESCRIPTION.

Curve Information

CURVE #	LENGTH	DELTA	RADIUS	CHORD	BEARING
C-1	262.52'	273.74°	1035'	248.46'	S 71°58'21" W
C-2	194.52'	142.52°	1035'	142.52'	S 54°57'11" W
C-3	315.52'	168.52°	1035'	241.11'	S 41°56'01" E
C-4	434.52'	202.52°	1035'	314.47'	N 48°54'51" E
C-5	553.52'	236.52°	1035'	387.83'	N 35°53'41" E
C-6	672.52'	270.52°	1035'	461.19'	N 22°52'31" E
C-7	791.52'	304.52°	1035'	534.55'	N 9°51'21" E
C-8	910.52'	338.52°	1035'	607.91'	N 0°50'11" E
C-9	1029.52'	372.52°	1035'	681.27'	N 1°49'01" E
C-10	1148.52'	406.52°	1035'	754.63'	N 2°47'51" E
C-11	1267.52'	440.52°	1035'	827.99'	N 3°46'41" E
C-12	1386.52'	474.52°	1035'	901.35'	N 4°45'31" E
C-13	1505.52'	508.52°	1035'	974.71'	N 5°44'21" E
C-14	1624.52'	542.52°	1035'	1048.07'	N 6°43'11" E
C-15	1743.52'	576.52°	1035'	1121.43'	N 7°42'01" E
C-16	1862.52'	610.52°	1035'	1194.79'	N 8°40'51" E
C-17	1981.52'	644.52°	1035'	1268.15'	N 9°39'41" E
C-18	2100.52'	678.52°	1035'	1341.51'	N 10°38'31" E
C-19	2219.52'	712.52°	1035'	1414.87'	N 11°37'21" E
C-20	2338.52'	746.52°	1035'	1488.23'	N 12°36'11" E
C-21	2457.52'	780.52°	1035'	1561.59'	N 13°35'01" E

# DRAFT