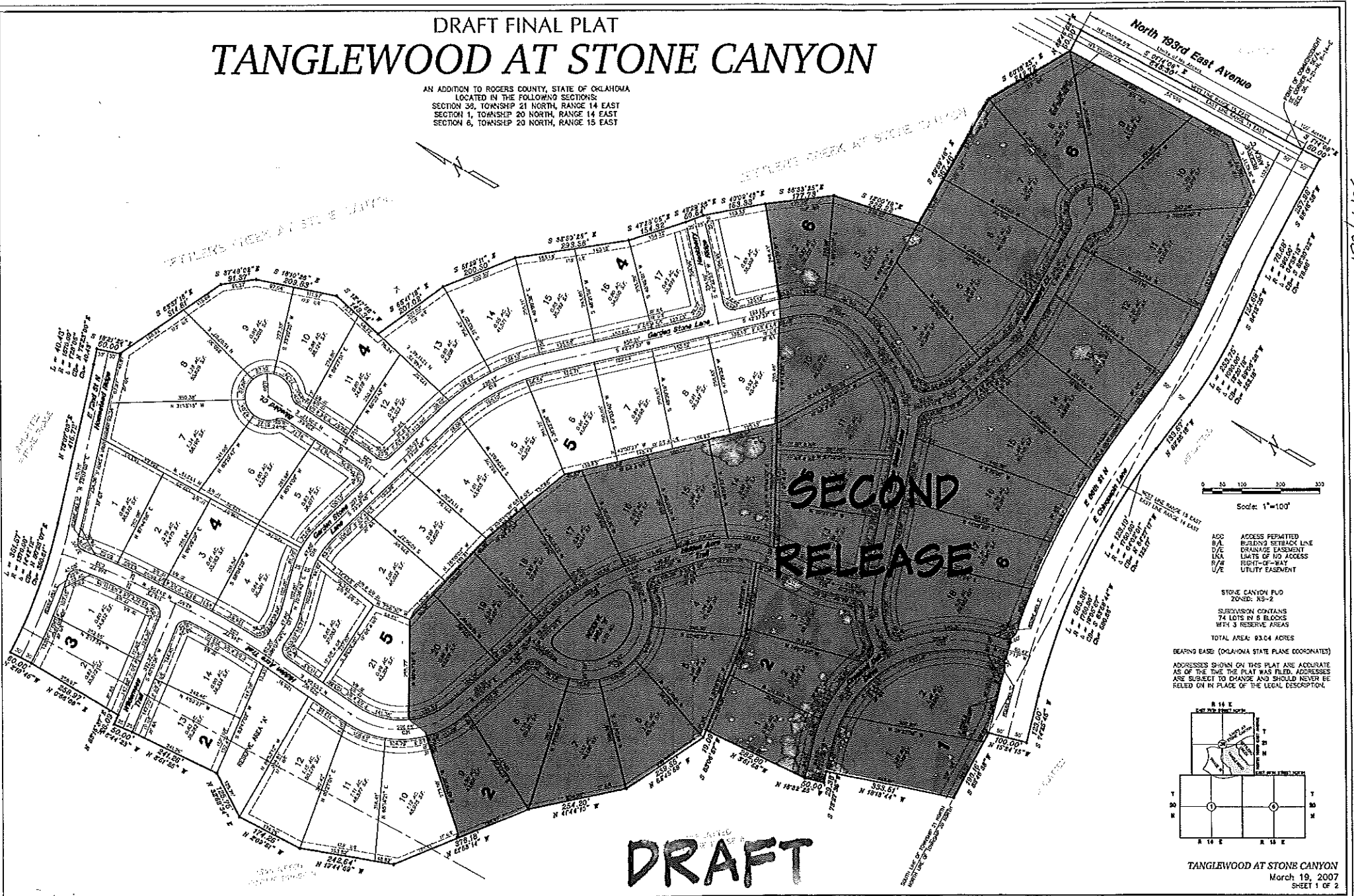


# DRAFT FINAL PLAT

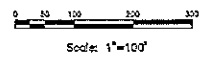
## TANGLEWOOD AT STONE CANYON

AN ADDITION TO ROGERS COUNTY, STATE OF OKLAHOMA  
 LOCATED IN THE FOLLOWING SECTIONS:  
 SECTION 35, TOWNSHIP 21 NORTH, RANGE 14 EAST  
 SECTION 1, TOWNSHIP 20 NORTH, RANGE 14 EAST  
 SECTION 6, TOWNSHIP 20 NORTH, RANGE 15 EAST



**DRAFT**

SRPT 1007



- A/C ACCESS PERMITTED
- B/L BUILDING SETBACK LINE
- D/E DRAINAGE EASEMENT
- L/A LIMITS OF 10' ACCESS
- R/W RIGHT-OF-WAY
- U/E UTILITY EASEMENT

STONE CANYON PLD  
 ZONED: RS-2  
 SUBDIVISION CONTAINS  
 74 LOTS IN 8 BLOCKS  
 WITH 3 RESERVE AREAS  
 TOTAL AREA: 93.04 ACRES

BEARING BASE (OKLAHOMA STATE PLANE COORDINATES)  
 ADDRESSES SHOWN ON THIS PLAT ARE ACCURATE  
 AS OF THE TIME THE PLAT WAS FILED. ADDRESSES  
 ARE SUBJECT TO CHANGE AND SHOULD NEVER BE  
 RELIED ON IN PLACE OF THE LEGAL DESCRIPTION.

